



OLD HICKORY

BUILDINGS

A Tradition of Quality
SINCE 1997



BUY OR RENT TO OWN



OLDHICKORYBUILDINGS.COM



IT'S NOT JUST ANY OLD BUILDING... IT'S AN
OLD HICKORY BUILDING



DEPENDABLE LONGEVITY

SINCE 1997

With over 700 locations in North America, a huge variety of buildings and options to choose from, and an inventory of over 10,000 buildings in stock and ready to deliver, you're sure to get the building you need, when you need it.



EXCEEDING OUR CUSTOMER'S EXPECTATIONS

Using the old fashioned, country tradition of barn building, we at Old Hickory Buildings create quality storage buildings for many happy customers throughout North America. Our factories use the same traditional construction techniques and philosophies handed down from generation to generation among the many Amish and Mennonite communities. In fact, the kind of quality, care and attention to detail that we put into each and every one of our barns is how we became leaders in our industry. Our overriding philosophy of quality can be seen in our company's culture every day. From the premium materials we use to the engineer certification process, and from our highly skilled and customer friendly delivery drivers to our knowledgeable salespeople, you can be confident that you'll get the best building for your needs at a price within your budget.



A TRADITION OF QUALITY

Old Hickory Buildings is a leader you can trust in the portable storage industry. For over 20 years, we have succeeded by providing our customers with dependable storage solutions and a quality buying experience.



OLDHICKORYBUILDINGS.COM

LOFTED BARN PRICING
TREATED & PAINTED (ONE COLOR)

SIZE	CASH PRICE*	RENT TO OWN (36 MO)	RENT TO OWN (60 MO)**
8x10	\$2,195	\$101 ⁶²	\$81 ³⁰
8x12	\$2,325	\$107 ⁶⁴	\$86 ¹¹
8x16	\$2,625	\$121 ⁵³	\$97 ²²
10x10	\$2,495	\$115 ⁵¹	\$92 ⁴¹
10x12	\$2,695	\$124 ⁷⁷	\$99 ⁸¹
10x14	\$2,975	\$137 ⁷³	\$110 ¹⁹
10x16	\$3,145	\$145 ⁶⁰	\$116 ⁴⁸
10x20	\$3,775	\$174 ⁷⁷	\$139 ⁸¹
12x16	\$3,875	\$179 ⁴⁰	\$143 ⁵²
12x20	\$4,345	\$201 ¹⁶	\$160 ⁹³
12x24	\$5,195	\$240 ⁵¹	\$192 ⁴¹
12x28	\$5,975	\$276 ⁶²	\$221 ³⁰
12x30	\$6,275	\$290 ⁵¹	\$232 ⁴¹
12x32	\$6,395	\$296 ⁰⁶	\$236 ⁸⁵
12x36	\$6,975	\$322 ⁹²	\$258 ³³
12x40	\$7,445	\$344 ⁶⁸	\$275 ⁷⁴
14x24	\$6,745	\$312 ²⁷	\$249 ⁸¹
14x28	\$7,645	\$353 ⁹⁴	\$283 ¹⁵
14x32	\$8,645	\$400 ²³	\$320 ¹⁹
14x36	\$9,325	\$431 ⁷¹	\$345 ³⁷
14x40	\$9,895	\$458 ¹⁰	\$366 ⁴⁸
➤ 16x24	\$8,095	\$374 ⁷⁷	\$299 ⁸¹
➤ 16x28	\$9,175	\$424 ⁷⁷	\$339 ⁸¹
➤ 16x32	\$10,345	\$478 ⁹⁴	\$383 ¹⁵
➤ 16x36	\$11,175	\$517 ³⁶	\$413 ⁸⁹
➤ 16x40	\$11,875	\$549 ⁷⁷	\$439 ⁸¹

• Up to 16 ft of loft included in price, depending on size. Additional charges apply if over 16 ft. No discount for subtracting loft.

• 6'3" INSIDE WALL HEIGHT STANDARD

LOFTED BARN



BARN WHITE PAINT & GAP GRAY TRIM PAINT ON LP SMART PANEL SIDING



GRAY SHADOW PAINT & BARN WHITE TRIM PAINT ON LP SMART PANEL SIDING





SEE PAGE 10 FOR DETAILS

BARN PRICING
TREATED & PAINTED (ONE COLOR)

SIZE	CASH PRICE*	RENT TO OWN (36 MO)	RENT TO OWN (60 MO)**
8x8	\$1,525	\$70 ⁶⁰	\$56 ⁴⁸
8x10	\$1,625	\$75 ²³	\$60 ¹⁹
8x12	\$1,725	\$79 ⁸⁶	\$63 ⁸⁹
8x16	\$2,195	\$101 ⁶²	\$81 ³⁰
10x10	\$1,995	\$92 ³⁶	\$73 ⁸⁹
10x12	\$2,095	\$96 ⁹⁹	\$77 ⁵⁹
10x14	\$2,395	\$110 ⁸⁸	\$88 ⁷⁰
10x16	\$2,495	\$115 ⁵¹	\$92 ⁴¹
10x20	\$3,025	\$140 ⁰⁵	\$112 ⁰⁴
12x16	\$3,245	\$150 ²³	\$120 ¹⁹
12x20	\$3,775	\$174 ⁷⁷	\$139 ⁸¹
12x24	\$4,445	\$205 ⁷⁹	\$164 ⁶³

• 4' INSIDE WALL HEIGHT

BARN





SEE PAGE 10 FOR DETAILS

UTILITY SHED



HONEY GOLD URETHANE & CLAY TRIM PAINT ON LP SMART PANEL SIDING



T1-11 PRESSURE TREATED SIDING





SEE PAGE 10 FOR DETAILS

- 6'3" INSIDE WALL HEIGHT STANDARD
- OPTIONAL 7' TALL WALLS (81"INSIDE) AVAILABLE
- OPTIONAL 8' TALL WALLS (92"INSIDE) AVAILABLE

UTILITY SHED PRICING
TREATED & PAINTED (ONE COLOR)
6' WALLS

SIZE	CASH PRICE*	RENT TO OWN (36 MO)	RENT TO OWN (60 MO)**
8x8	\$1,625	\$75 ²³	\$60 ¹⁹
8x10	\$1,745	\$80 ⁷⁹	\$64 ⁶³
8x12	\$1,875	\$86 ⁸¹	\$69 ⁴⁴
8x16	\$2,475	\$114 ⁵⁸	\$91 ⁶⁷
10x10	\$2,195	\$101 ⁶²	\$81 ³⁰
10x12	\$2,345	\$108 ⁵⁶	\$86 ⁸⁵
10x14	\$2,725	\$126 ¹⁶	\$100 ⁹³
10x16	\$2,825	\$130 ⁷⁹	\$104 ⁶³
10x20	\$3,575	\$165 ⁵¹	\$132 ⁴¹
12x16	\$3,495	\$161 ⁸¹	\$129 ⁴⁴
12x20	\$3,975	\$184 ⁰³	\$147 ²²
12x24	\$4,625	\$214 ¹²	\$171 ³⁰
12x28	\$5,245	\$242 ⁸²	\$194 ²⁶
12x30	\$5,595	\$259 ⁰³	\$207 ²²
12x32	\$5,875	\$271 ⁹⁹	\$217 ⁵⁹
12x36	\$6,345	\$293 ⁷⁵	\$235 ⁰⁰
12x40	\$6,745	\$312 ²⁷	\$249 ⁸¹
14x24	\$6,175	\$285 ⁸⁸	\$228 ⁷⁰
14x28	\$6,925	\$320 ⁶⁰	\$256 ⁴⁸
14x32	\$7,925	\$366 ⁹⁰	\$293 ⁵²
14x36	\$8,845	\$409 ⁴⁹	\$327 ⁵⁹
14x40	\$9,545	\$441 ⁹⁰	\$353 ⁵²
➤ 16x24	\$7,395	\$342 ³⁶	\$273 ⁸⁹
➤ 16x28	\$8,345	\$386 ³⁴	\$309 ⁰⁷
➤ 16x32	\$9,495	\$439 ⁵⁸	\$351 ⁶⁷
➤ 16x36	\$10,595	\$490 ⁵¹	\$392 ⁴¹
➤ 16x40	\$11,445	\$529 ⁸⁶	\$423 ⁸⁹

ECONOMY





ECONOMY PRICING
TREATED & PAINTED (ONE COLOR)

SIZE	CASH PRICE*	RENT TO OWN (36 MO)	RENT TO OWN (60 MO)**
8x8	\$1,425	\$65 ⁹⁷	\$52 ⁷⁸
8x12	\$1,625	\$75 ²³	\$60 ¹⁹
10x12	\$1,995	\$92 ³⁶	\$73 ⁸⁹

- The above prices are for the Economy Barn and the Economy Utility.
- Supplies limited on Economy Buildings.
- Lead times for custom orders vary.
- Economy Utility Sheds come with 6' walls ONLY.
- NON-CERTIFIED ONLY.
- Economy Buildings are sold as is – no warranty.

- See pages 9-12 for siding, colors & building options.
- All 8' wide buildings come with a single door (excluding packages).
- All 10', 12', 14' & 16' wide buildings come with double doors (excluding packages).

*Prices shown include 3% discount offered for purchases made with cash or check. Credit card purchases are not eligible for the discounted price and will be priced 3% higher.

One color paint/water sealer included in above price. Urethane and additional colors are extra.

12' wide and over buildings are measured across the eaves due to DOT regulations (all others are measured from outside corners).

➤ 16' wide buildings not available in all areas. See dealer for details.

**Not available at all locations. See dealer for details.

PLAYHOUSE

- **BUILDING MUST INCLUDE A PORCH TO GET PACKAGE PRICE**
- **ADD PACKAGE PRICE TO SAME SIZE UTILITY SHED OR LOFTED BARN**

Includes 9 lite window door, 4 ft. porch*, two posts, and three 2x3 windows. The Utility Style Playhouse Package will include 8 ft. walls. Package price does not include wooden barn doors.

*Total length of building includes 4ft porch.

\$695

ADDS \$32¹⁸ TO 36 MONTH RENT
ADDS \$25⁷⁴ TO 60 MONTH RENT*



T1-11 PRESSURE TREATED SIDING

BUCKSKIN PAINT & BARN WHITE TRIM PAINT ON LP DUTCH LAP SIDING



PINNACLE RED PAINT & BARN WHITE TRIM PAINT ON LP SMART PANEL SIDING

T1-11 PRESSURE TREATED SIDING

DELUXE PLAYHOUSE

- **BUILDING MUST INCLUDE A PORCH TO GET PACKAGE PRICE**
- **ADD PACKAGE PRICE TO SAME SIZE UTILITY SHED OR LOFTED BARN**

Includes 9 lite window door, porch, porch railing (Included porch railing is 3 sections that are approx. 4ft each.), four posts, and five 2x3 windows. The Utility Style Deluxe Playhouse Package will also include 8ft walls. Minimum size is 12x24. Package price does not include wooden barn doors.

*Total length of building includes 4ft porch.

\$1,275

ADDS \$59⁰³ TO 36 MONTH RENT
ADDS \$47²² TO 60 MONTH RENT*



T1-11 PRESSURE TREATED SIDING

MAHOGANY URETHANE & BARN WHITE TRIM PAINT ON LP SMART PANEL SIDING

SIDE PORCH

- **BUILDING MUST INCLUDE A PORCH TO GET PACKAGE PRICE**
- **ADD PACKAGE PRICE TO SAME SIZE UTILITY SHED OR LOFTED BARN**

Includes 9 lite window door, porch, porch railing (included porch railing is approx. 4 ft.), one post, two 2x3 windows and double barn doors. The Utility Style Side Porch Package will also include 8 ft. walls.

*Total length of building includes 4ft porch.

\$795

ADDS \$36⁸¹ TO 36 MONTH RENT
ADDS \$29⁴⁴ TO 60 MONTH RENT*

UTILITY DORMER

- **ADD PACKAGE PRICE TO SAME SIZE UTILITY SHED**

Includes three 10" x 29" windows in dormer and 7' (81" inside) wall height. Only available on 8', 10' & 12' wide buildings. This is a package deal, options may be removed but no credit given on price. More than one dormer can be added to building if size permits. Add \$695 for each additional dormer.

Package shown with extra options including two 2x3 windows with shutters, two 10"x29" windows in doors and different color shutter trim and doors.

\$895

ADDS \$41⁴⁴ TO 36 MONTH RENT
ADDS \$33¹⁵ TO 60 MONTH RENT*



GAP GRAY PAINT, NAVAJO TRIM PAINT & DRIFTWOOD URETHANE ON SHUTTERS & DOORS ON LP SMART PANEL SIDING

GARAGE

- **BUILDING MUST INCLUDE A GARAGE DOOR AND HOUSE-STYLE DOOR TO QUALIFY FOR PACKAGE PRICE**
- **ADD PACKAGE PRICE TO SAME SIZE UTILITY SHED OR LOFTED BARN**

Includes garage door, solid house-style door, one 2x3 window and 12" on center floor joists. The Utility Style Garage Package will also include 8 ft. walls. Package price does not include wooden barn doors.

\$795

ADDS \$36⁸¹ TO 36 MONTH RENT
ADDS \$29⁴⁴ TO 60 MONTH RENT*



SCARLET RED PAINT & BARN WHITE TRIM PAINT ON LP SMART PANEL SIDING

T1-11 PRESSURE TREATED SIDING



SCARLET RED PAINT, BARN WHITE TRIM PAINT & BLACK PAINTED SHUTTERS ON LP SMART PANEL SIDING SHOWN WITH 6" FRONT & BACK ROOF OVERHANG



CHESTNUT BROWN URETHANE WITH GAP GRAY TRIM PAINT ON LP DUTCH LAP SIDING

*Not available at all locations. See dealer for details.

*Not available at all locations. See dealer for details.

ANIMAL SHELTER

FEATURES

- 4x6 Pressure Treated perimeter base.
- 1 1/4" Pressure Treated Kick Boards approximately 4' high, spaced 1.5" apart
- 8' wide opening is standard. Up to 10' wide openings available. See dealer for special pricing on custom width frameouts.
- Standard one stall per 20 feet of length or less (not counting tack room), unless specifically ordered differently.
For example a 12x12 would have one stall standard, a 12x20 would have one stall standard, a 12x24 would come with 2 stalls standard – all examples are without tack room.
- Additional stalls (includes opening and divider) can be added for \$350 per stall (optional).

TACK ROOM

- \$95/foot of length (minimum of 4'). (Tack Room starts on an outside end wall. Add \$350 to start on an inside divider wall.)
- Pressure Treated or T&G flooring depending on area & availability.
- OSB divider wall between tack room & stall.
- 3' Wooden Barn door on all tack rooms. Upgrade to 4' wooden barn door for \$20 (where applicable).

Buildings will be set directly on ground with no blocking. Ground must be suitable for application prior to delivery.

ANIMAL SHELTER PRICING TREATED & PAINTED (ONE COLOR) 8' WALLS

SIZE	CASH PRICE*	RENT TO OWN (36 MO)	RENT TO OWN (60 MO)**
8x12	\$2,000	\$92 ⁵⁹	\$74 ⁰⁷
8x16	\$2,600	\$120 ³⁷	\$96 ³⁰
10x10	\$2,320	\$107 ⁴¹	\$85 ⁹³
10x12	\$2,470	\$114 ³⁵	\$91 ⁴⁸
10x14	\$2,850	\$131 ⁹⁴	\$105 ⁵⁶
10x16	\$2,950	\$136 ⁵⁷	\$109 ²⁶
10x20	\$3,700	\$171 ³⁰	\$137 ⁰⁴
12x16	\$3,620	\$167 ⁵⁹	\$134 ⁰⁷
12x20	\$4,100	\$189 ⁸¹	\$151 ⁸⁵
12x24	\$4,750	\$219 ⁹¹	\$175 ⁹³
12x28	\$5,370	\$248 ⁶¹	\$198 ⁸⁹
12x30	\$5,720	\$264 ⁸¹	\$211 ⁸⁵
12x32	\$6,000	\$277 ⁷⁸	\$222 ²²
12x36	\$6,470	\$299 ⁵⁴	\$239 ⁶³
12x40	\$6,870	\$318 ⁰⁶	\$254 ⁴⁴
14x24	\$6,300	\$291 ⁶⁷	\$233 ³³
14x28	\$7,050	\$326 ³⁹	\$261 ¹¹
14x32	\$8,050	\$372 ⁶⁹	\$298 ¹⁵
14x36	\$8,970	\$415 ²⁸	\$332 ²²
14x40	\$9,670	\$447 ⁶⁹	\$358 ¹⁵
► 16x24	\$7,520	\$348 ¹⁵	\$278 ⁵²
► 16x28	\$8,470	\$392 ¹³	\$313 ⁷⁰
► 16x32	\$9,620	\$445 ³⁷	\$356 ³⁰
► 16x36	\$10,720	\$496 ³⁰	\$397 ⁰⁴
► 16x40	\$11,570	\$535 ⁶⁵	\$428 ⁵²



ANIMAL SHELTER

Shown with additional stall. See features for details.



ANIMAL SHELTER & TACK ROOM

Shown with 4' door. 10" x 35" window in door is extra & not included in package price. See page 12 for option pricing.

ANIMAL SHELTER SECURITY DEPOSITS

\$200
on 8' & 10' wide buildings

\$400
on 12' wide buildings

\$1,000
on 14' wide buildings

\$2,000
on 16' wide buildings

THE CABANA



CABANA SECURITY DEPOSITS

\$200 on 8' & 10' wide buildings

\$400 on 12' wide buildings

CABANA PRICING TREATED | 8' WALLS

SIZE	CASH PRICE*	RENT TO OWN (36 MO)	RENT TO OWN (60 MO)**
10x12	\$2,895	\$134 ⁰³	\$107 ²²
10x16	\$3,725	\$172 ⁴⁵	\$137 ⁹⁶
10x20	\$4,645	\$215 ⁰⁵	\$172 ⁰⁴
12x16	\$4,475	\$207 ¹⁸	\$165 ⁷⁴
12x20	\$5,525	\$255 ⁷⁹	\$204 ⁶³
12x24	\$6,625	\$306 ⁷¹	\$245 ³⁷

12' wide and over buildings are measured across the eaves due to DOT regulations (all others are measured from outside corners). | *Prices shown include 3% discount offered for purchases made with cash or check. Credit card purchases are not eligible for the discounted price and will be priced 3% higher. | ►16' wide buildings not available in all areas. See dealer for details. | **Not available at all locations. See dealer for details. One color paint/water sealer included in above price. Urethane and additional colors are extra.

METAL SHED



- SPACIOUS 6'7" TALL WALLS STANDARD ON METAL SHED & METAL LOFTED
- 36" OC STUDS/TRUSSES ARE STANDARD

METAL SHED PRICING

SIZE	CASH PRICE*	RENT TO OWN (36 MO)	RENT TO OWN (60 MO)**
10x10	\$1,825	\$84 ⁴⁹	\$67 ⁵⁹
10x12	\$2,045	\$94 ⁶⁸	\$75 ⁷⁴
10x16	\$2,375	\$109 ⁹⁵	\$87 ⁹⁶
10x20	\$2,675	\$123 ⁸⁴	\$99 ⁰⁷
12x16	\$2,925	\$135 ⁴²	\$108 ³³
12x20	\$3,245	\$150 ²³	\$120 ¹⁹
12x24	\$3,725	\$172 ⁴⁵	\$137 ⁹⁶
12x28	\$4,145	\$191 ⁹⁰	\$153 ⁵²
12x32	\$4,625	\$214 ¹²	\$171 ³⁰

METAL LOFTED



METAL LOFTED PRICING

SIZE	CASH PRICE*	RENT TO OWN (36 MO)	RENT TO OWN (60 MO)**
8x10	\$1,945	\$90 ⁰⁵	\$72 ⁰⁴
8x12	\$2,045	\$94 ⁶⁸	\$75 ⁷⁴
8x16	\$2,245	\$103 ⁹⁴	\$83 ¹⁵
10x10	\$2,375	\$109 ⁹⁵	\$87 ⁹⁶
10x12	\$2,475	\$114 ⁵⁸	\$91 ⁶⁷
10x16	\$2,925	\$135 ⁴²	\$108 ³³
10x20	\$3,245	\$150 ²³	\$120 ¹⁹
12x16	\$3,495	\$161 ⁸¹	\$129 ⁴⁴
12x20	\$3,945	\$182 ⁶⁴	\$146 ¹¹
12x24	\$4,375	\$202 ⁵⁵	\$162 ⁰⁴
12x28	\$4,825	\$223 ³⁸	\$178 ⁷⁰
12x32	\$5,275	\$244 ²¹	\$195 ³⁷

CHOOSE ANY METAL COLOR(S) FROM PAGE 9 FOR ROOF, SIDING & TRIM.
(STANDARD OR SPECIAL ORDER METAL COLORS INCLUDED IN PRICE.)

METAL BUILDING OPTIONS

2' x 3' WINDOW (CENTER OF BACK WALL ONLY)	\$75
3' x 3' WINDOW (CENTER OF BACK WALL ONLY)	\$85
SHELVES (3 TIER, PRICED PER FOOT OF WIDTH)	\$10/ft
SINGLE 3' DOOR	\$60
SINGLE 4' DOOR	\$80
DOUBLE DOORS	\$120
WORKBENCH (PRICED PER FOOT OF WIDTH)	\$12/ft
GARAGE DOOR (12' WIDE LOFTED BARNES ONLY) (12" ON CENTER FLOOR JOISTS INCLUDED)	\$525
3/4" FLOORING	\$.40 /sq ft
12" ON CENTER FLOOR JOISTS	\$.30 /sq ft
CERTIFIED MODELS	Additional 5%

NO OPTIONS ON SIDE WALL OF METAL BUILDINGS



METAL
LOFTED
GARAGE
12' WIDE



METAL PROVIDED BY:



WWW.METALMAX.COM

*Prices shown include 3% discount offered for purchases made with cash or check. Credit card purchases are not eligible for the discounted price and will be priced 3% higher. | **Not available at all locations. See dealer for details.

METAL COLORS | ROOFING, SIDING & TRIM

STANDARD METAL*

RUSTIC RED	BURNISHED SLATE
CHARCOAL	HUNTER GREEN
BLACK	SILVER

SPECIAL ORDER METAL* + \$45 (EXCLUDING METAL BUILDINGS)

BRILLIANT WHITE	ALAMO WHITE	ASH GRAY
LIGHT STONE	TAN	TAUPE
PEWTER GRAY	BROWN	BRITE RED
BURGUNDY	GALLERY BLUE	OCEAN BLUE

SHINGLE ROOF*



METAL ADVANTAGES

- 29 Gauge high quality metal.
- **30 YEAR LIMITED WARRANTY**
All metal roofing and siding comes with a 30 year limited warranty against rust through.
- Match your home or existing building(s) or offer a nice contrast or focal point.
- Does not depend on foreign oil as a raw material.
- Metal is 100% recyclable & virtually worry-free.

SHINGLE ADVANTAGES

- Residential grade architectural shingles.
- 30 year limited warranty.
- Match your home or existing building(s).

YOU CHOOSE METAL OR SHINGLE ROOF

SAME PRICE ON ALL BUILDINGS
(STANDARD METAL COLORS)



URETHANE COLORS STAINED COLOR APPEARANCE*

CHESTNUT BROWN	HONEY GOLD
MAHOGANY	DRIFTWOOD
DARK EBONY	

**10 YEAR GUARANTEE
AGAINST FADING**

PAINT COLORS SOLID COLOR APPEARANCE*

BARN WHITE	NAVAJO	BEIGE
CLAY	BUCKSKIN	BROWN
GRAY SHADOW	GAP GRAY	BLACK
EVERGREEN	PINNACLE RED	SCARLET RED

*Actual colors may vary from those displayed in brochure. See dealer for actual color swatch.
OHB is not responsible for colors not matching the brochure.

FLOORING OPTIONS

- 4x6 Pressure treated skids are notched for floor joists which greatly increases strength and prevents twisting - **standard**
- 16 inch on center pressure treated floor joists - **standard**
- 12 inch on center pressure treated floor joists - **optional** (standard on garages)
- 2x4 Pressure treated floor joists - **standard**
- 2x6 Pressure treated floor joists - **optional** (standard on 14' and 16' wide buildings)

5/8" CDX grade square edge, Pressure treated plywood

- Lifetime warranty against termites & fungal decay
- Choose this flooring if you want a lifetime warranty against termites & fungal decay and are not as concerned with small imperfections and knots in the appearance or seam gaps due to shrinkage from the pressure treating process

3/4" Pressure treated plywood – optional

YOU CHOOSE: treated square edge or T&G - SAME PRICE

5/8" Tongue and Groove, Engineered Panels

- Exceptional strength and stiffness for a flatter, more stable floor
- Free of knots and patches with a thermally fused face
- Advanced resins are moisture resistant
- Choose this if you want a seamless floor with a virtually flawless appearance

3/4" Tongue and Groove, Engineered Panels – optional

Standard floor designed for 40 lb/sq. ft. **LIVE LOAD** and 200 lb/sq. ft. **POINT LOAD**. Additional options are available.
See dealer/website for more heavy duty options.



Engineer Certified buildings are certified for 20 psf Ground Snow Load and 105 mph winds (wind rating requires customer supplied anchors). Additional options are available – see dealer/website for more details. Standard set of engineered plans available with purchase of building upon request. Price does not include anchors, calculations or elevations. Extra charges apply for custom plans, calculations or elevations. Designed to meet IBC standards, not guaranteed for every local jurisdiction. Our buildings are classified as Minor Storage Facilities (Occupancy Category 1) and not intended for any other use. Economy style and Metal buildings are not certified as a standard. These can be built as certified for an additional charge.

ENGINEER
certified

STANDARD SIDING



5/8" T1-11 PRESSURE TREATED NO ADDITIONAL CHARGE

- 24" OC STUDS (DOUBLED UNDER SEAMS) & 24" OC TRUSSES (66% thicker siding easily spans 24" OC stud spacing, with doubled support under seams to equal the same amount of wood as in 16" OC spacing)
- PRESSURE TREATED and features a LIMITED LIFETIME WARRANTY against termites and fungal decay
- Tried and true PREMIUM grade REAL PLYWOOD SIDING
- 5/8" thick, 66% THICKER than many competing siding products
- Comes water sealed with 4 YEAR water sealer

AVAILABLE COATINGS: WATER SEALER (ONLY)



3/8" LP SMART PANEL NO ADDITIONAL CHARGE

- 16" OC STUDS / 24" OC TRUSSES / DOUBLE TOP STUD PLATE
- CUTTING EDGE TECHNOLOGY, engineered wood product that is WATER RESISTANT
- ZINC BORATE TREATED throughout to help resist fungal decay and termite damage
- Comes with a 50 YEAR LIMITED WARRANTY

AVAILABLE COATINGS: PAINT & URETHANE (ONLY)

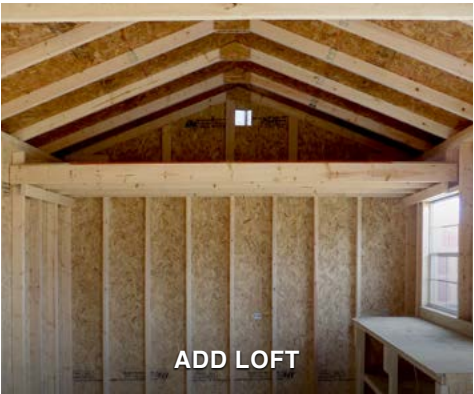
OPTIONAL SIDING



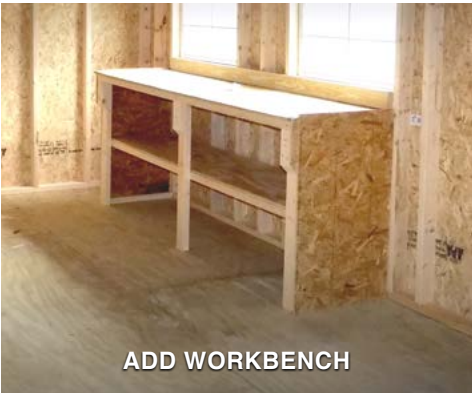
LP DUTCH LAP 15% ADDITIONAL CHARGE

- 16" OC STUDS / 24" OC TRUSSES / DOUBLE TOP STUD PLATE
- CUTTING EDGE TECHNOLOGY, engineered wood product that is WATER RESISTANT
- ZINC BORATE TREATED throughout to help resist fungal decay and termite damage
- OPTIONAL HOUSE WRAP can be installed between OSB sheathing and lap siding
- 2 LAYER SIDING SYSTEM. Lap siding is installed over OSB sheathing, same as in home construction
- Comes with a 50 YEAR LIMITED WARRANTY

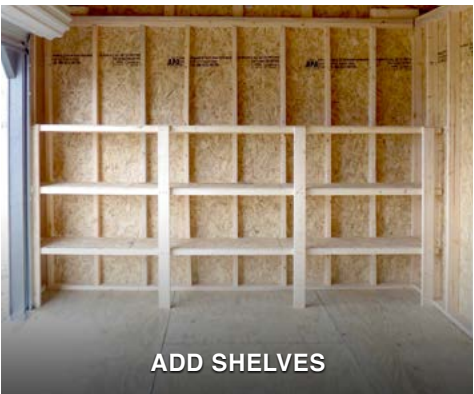
AVAILABLE COATINGS: PAINT & URETHANE (ONLY)



ADD LOFT

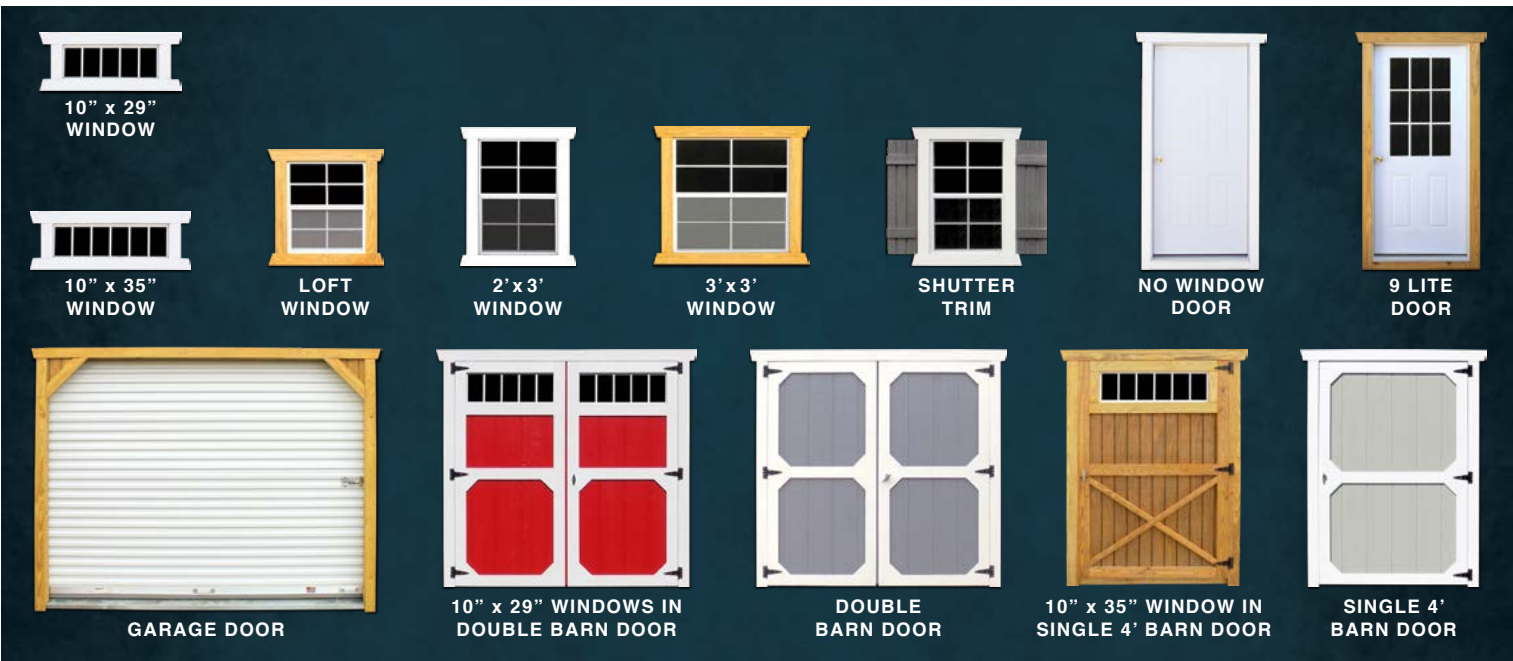


ADD WORKBENCH



ADD SHELVES

LOFT WINDOW (24" x 27") (IN LOFT ONLY)	\$75
2' x 3' WINDOW	\$75
2' x 3' DOUBLE PANE WINDOW	\$175
3' x 3' WINDOW	\$85
3' x 3' DOUBLE PANE WINDOW	\$225
10" x 29" WINDOW	\$70
10" x 35" WINDOW	\$85
SHUTTER TRIM	\$45 PER WINDOW
HOUSE - STYLE DOOR, NO WINDOW (OPENS IN & TO THE RIGHT)	\$260
HOUSE - STYLE DOOR, 9 LITE WINDOW (OPENS IN & TO THE RIGHT)	\$320
SINGLE 3' WOODEN BARN DOOR	\$60
SINGLE 4' WOODEN BARN DOOR	\$80
DOUBLE WOODEN BARN DOORS	\$120
GARAGE DOOR (9'x7') (WALL MUST BE AT LEAST 12' WIDE x 8' TALL) (12" ON CENTER FLOOR JOISTS INCLUDED)	\$525
3/4" FLOORING (PRICED PER SQUARE FOOT)	\$.40/sq ft
2x6 FLOOR JOISTS (STANDARD ON 14' & 16' WIDE BUILDINGS)	\$.30/sq ft
12" ON CENTER FLOOR JOISTS (STANDARD ON GARAGES)	\$.30/sq ft
7 FOOT TALL WALLS (81" INSIDE) (UTILITIES)	\$125
8 FOOT TALL WALLS (92" INSIDE) (UTILITIES)	\$125
SHELVES (3 TIER) (PRICED PER FOOT OF WIDTH)	\$10/ft
WORKBENCH (PRICED PER FOOT OF WIDTH)	\$12/ft
LOFT (PRICED PER FOOT OF DEPTH)	\$20/ft
OPENING LOFT DOOR (LOFTED BARNs ONLY)	\$45
SPECIAL ORDER METAL ROOF COLOR (EXCLUDING METAL BUILDINGS)	\$45
16" ON CENTER STUDS AND TRUSSES (TREATED ONLY)	\$.70 /sq ft
16" ON CENTER TRUSSES (PAINTED ONLY)	\$.30 /sq ft
PORCH RAILING	\$12/ft
EXTRA PORCH POST	\$35/each
HOUSE WRAP (ON WALLS ONLY)	\$1 ²⁵ /sq ft
TAR PAPER (UNDER ROOFING ONLY)	\$1 ²⁵ /sq ft
TECH SHIELD	ON ROOF: +2% ADDITIONAL CHARGE
TECH SHIELD (SMART PANEL/DUTCH LAP ONLY)	ON WALLS: +3% ADDITIONAL CHARGE
6" FRONT & BACK ROOF OVERHANG (GABLE END WALLS)	\$200
7/12 PITCH (6' & 7' WALLS ONLY) (UTILITY ONLY) (8', 10' & 12' WIDE ONLY)	\$200
LP DUTCH LAP SIDING (SEE PAGE 11)	+15% ADDITIONAL CHARGE
PAINT (ONE STANDARD COLOR)	FREE
PAINTED BUILDING TRIM (SECOND COLOR / PAINT ONLY)	\$50
EACH ADDITIONAL COLOR (INCLUDES DOORS - PAINT OR URETHANE TRIM ON DOORS & SHUTTERS - PAINT ONLY)	\$50
UPGRADE TO URETHANE OR CUSTOM PAINT COLOR (8' & 10' WIDE BUILDINGS)	ADD \$100
UPGRADE TO URETHANE OR CUSTOM PAINT COLOR (12', 14' & 16' WIDE BUILDINGS)	ADD \$200



QUICK, FREE DELIVERY

& EASY SETUP WITHIN 30 MILES (SOME EXCLUSIONS APPLY)

We will provide you with a quick and efficient delivery experience. Delivery site must be accessible with a truck and trailer. **NO SITE PREPARATION NECESSARY** if site is accessible with truck and trailer and site is **NO MORE THAN 3 FEET OUT OF LEVEL. FREE SETUP** includes leveling with customer supplied concrete blocks and driver supplied pressure treated shims. Drivers can supply concrete blocks for \$2.50 each. **FIRST 30 MILES FREE.** Over 30 miles subject to additional charge. **ESCORTS MAY BE EXTRA:** A small number of local jurisdictions exceed state requirements and require additional escorts. Old Hickory will not charge the customer for any escorts which are required by state law, however if any additional escorts are needed the customer will be notified prior to delivery and charged upon delivery. See dealer to see if you are in an area where these charges apply.

JUST PAY THE FIRST MONTH'S RENT & SECURITY DEPOSIT & WE DELIVER & SET UP! IT'S THAT EASY!

• BUILDINGS AT THE SALES LOT:

Can **USUALLY** be delivered within 5-7 days. [WEATHER PERMITTING]

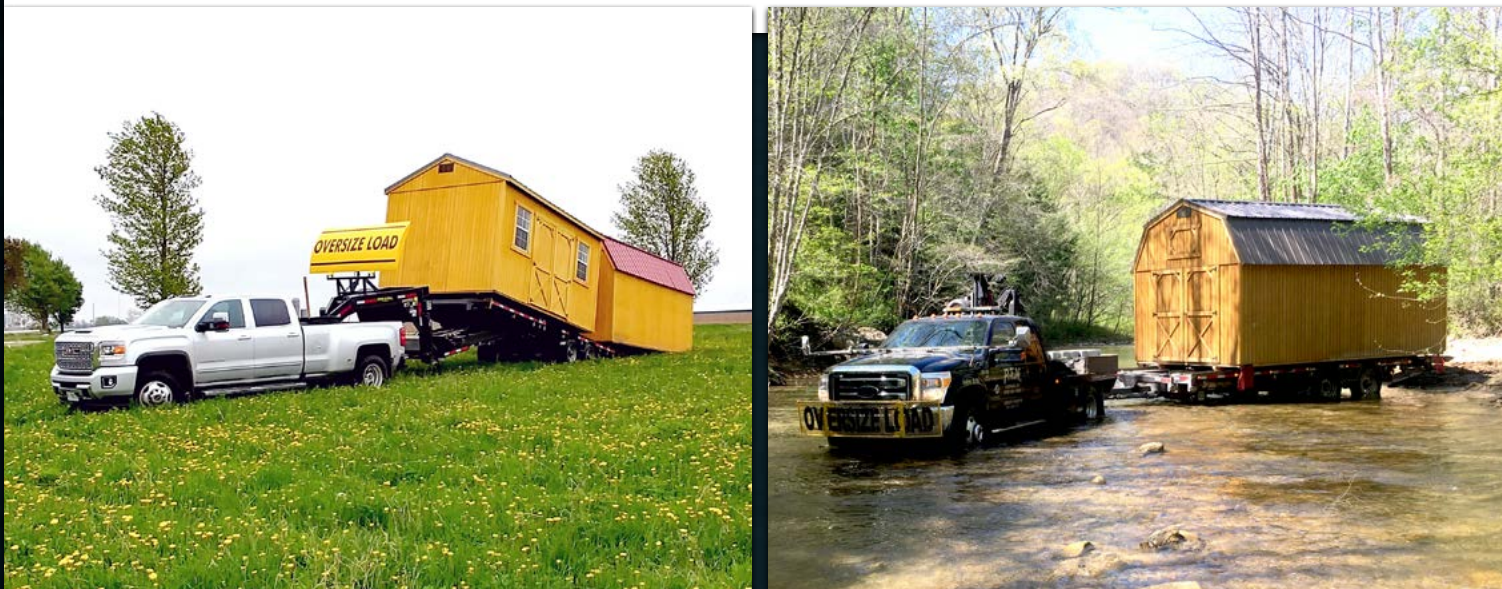
• ORDERED TREATED BUILDINGS:

Can **USUALLY** be delivered within 10-15 days. [WEATHER PERMITTING]

• ORDERED URETHANE, PAINTED & METAL BUILDINGS:

Can **USUALLY** be delivered within 15-20 days. [WEATHER PERMITTING]

NOTE: Non-standard metal colors on any building will add one week to the lead time. Peak season and poor weather conditions can add extra days on to the normal delivery time. Lead times vary; above delivery times do not apply to build on site buildings.



BUILD ON SITE

Old Hickory Buildings offers a build-on-site program for those situations where delivery is not an option or a customer wants a customized solution. See your dealer for more information. Old Hickory Buildings cannot paint, urethane or water seal on-site buildings. Paint/Urethane/Water Sealer not included in price.

• BUILD ON SITE BUILDINGS:

Can **USUALLY** be built on site within 2-6 weeks. [WEATHER PERMITTING]

NOTE: Lead times vary | Not available in all areas



RENT TO OWN

Our low monthly rental rates are comparable to mini-warehousing rates. Our no strings attached plan allows you to have your own storage facility at your home or business, when and where you need it.

Just pay a small security deposit plus your first month's rent and we'll set up your building at your location.

SECURITY DEPOSITS*

- **\$100** on 8' & 10' wide buildings
- **\$200** on 12' wide buildings
- **\$1,000** on 14' wide buildings
- **\$1,500** on 16' wide buildings

*Does not apply to Animal Shelter or Cabana. See page 7 for details.

NO STRINGS ATTACHED

The rental agreement is on a month to month basis, meaning you have the flexibility to turn in the building at any time for any reason.

SEE DEALER FOR DETAILS.

EARLY PAYOFF

Payoff anytime with no penalty. There is also a discount off the rental balance for those who pay off early.

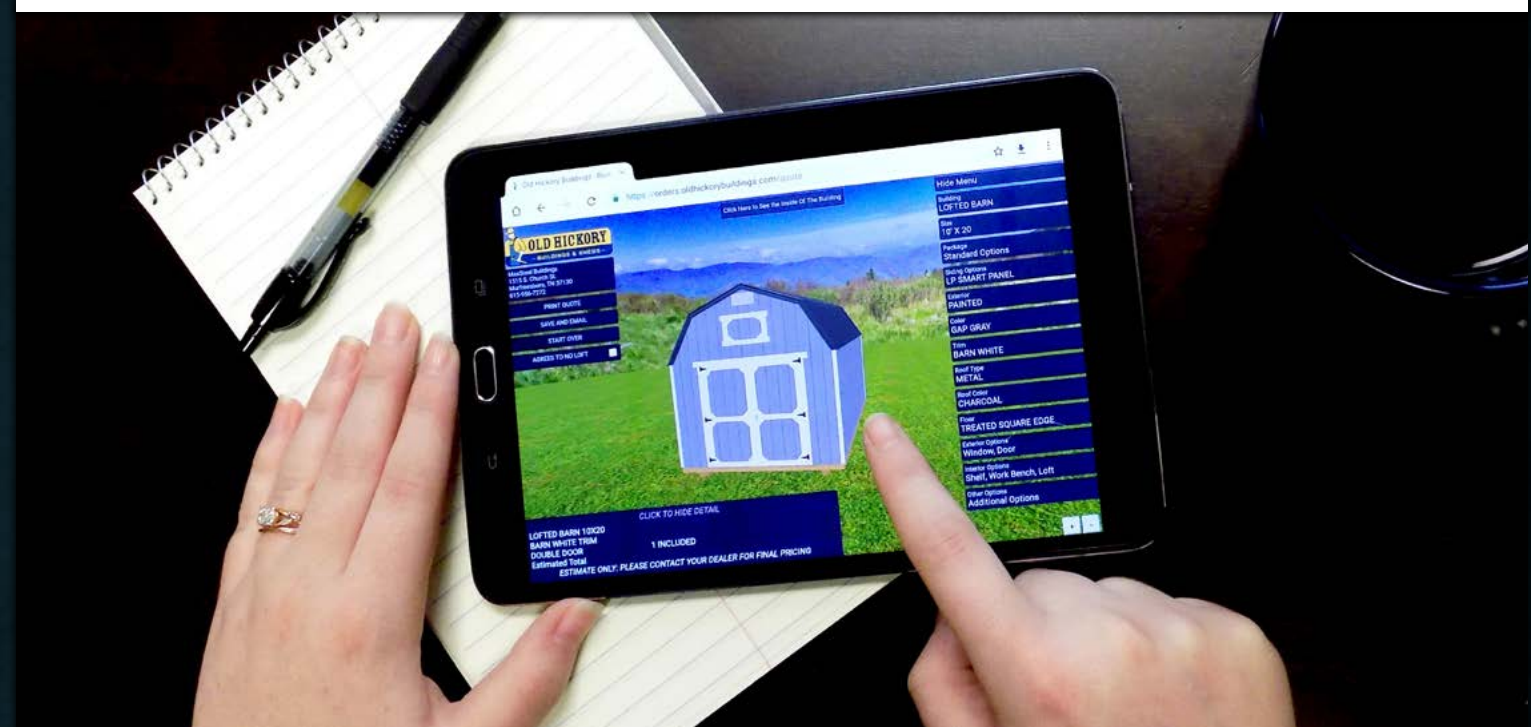
You will not own the building until you make all payments necessary to acquire ownership or you exercise the early payoff option.

If you decide to pay off the building within 90 days, we'll waive the entire cost of lease services.



BUILD & PRICE

Visit **OLDHICKORYBUILDINGS.COM** to design and customize your own building



WARRANTY & GUARANTEE

LOW PRICE GUARANTEE

We'll match any competitor's advertised price for same quality building. Competitor's building must have identical materials as Old Hickory Buildings. See dealer for details.

LIMITED LIFETIME WARRANTY

Against termite damage and fungal decay on all pressure treated wood, including pressure treated skids, floor joists (on all models), optional pressure treated flooring and optional pressure treated 5/8" T1-11 siding.

30 YEAR LIMITED WARRANTY ON METAL

All metal roofing and siding comes with a 30 year limited warranty against rust through.

FIVE YEAR LIMITED WARRANTY

We offer you peace of mind – with a limited 5 year warranty backed by a company that has been in business since 1997, you can trust that Old Hickory will be there if you need them, and with our warranty written, there will be no surprises in the rare event of a claim.

50 YEAR MANUFACTURER'S WARRANTY

For LP Dutch Lap Siding & LP Smart Panel Siding.

Follow the link provided for more information:

<http://lpcorp.com/media/1419/lp-smartside-warranty-english.pdf>

SEE OUR WEBSITE OLDHICKORYBUILDINGS.COM FOR SPECIAL PRICING ON SELECT BUILDINGS



A COMPANY YOU CAN TRUST

Old Hickory Buildings has over 700 locations in North America and is fully insured. We have been in business since 1997 and carry Liability Insurance and Worker's Compensation so you don't have to worry. Old Hickory Buildings is a name you can trust.

OLDHICKORYBUILDINGS.COM



Old Hickory Buildings, LLC and its associates are not responsible for permits, snow/wind load requirements, covenant searches, restrictions, setbacks, yard damage, or underground damage. Customer is responsible for compliance with any such requirements. Free setup includes leveling the building, starting with one corner at ground level and raising it up to a maximum of 3 feet. If leveling requires 1 foot or less, pressure treated wood may be used. Otherwise, customer may supply concrete blocks which are placed on top of the ground, or we can supply concrete blocks for \$2.50 each. In very rare cases, underground footers may be required by local building codes. Old Hickory Buildings does not offer digging or footer services and these are not included in free set up, however we can work with customer or contractor when required for an additional cost. Please contact your local Building Inspector and/or Homeowner's Association for information on requirements and restrictions. It is the customer's responsibility to decide if ground conditions are unsuitable for delivery. Free Delivery covers one trip up to 30 miles one way. Trips over 30 miles are subject to a \$2/mile (8ft, 9ft & 10ft wide) or \$3.50/mile (12ft & 14ft wide) or \$4.50/mile (16ft wide) charge one way. The customer will be responsible for the mileage charge as well as the cost of any additional trips. Escorts may cost extra, see dealer to see if you are in a zone requiring additional escorts. Old Hickory has the right to refuse any sale prior to the time when it is accepted and approved by Old Hickory's corporate office and the building is set up at customer's location.

ALL PRICES SUBJECT TO CHANGE.

12.18.19 -- (OHB_E.VA-3145) Old Hickory Buildings, LLC ©Copyright 2019 All rights reserved

E. VA
v10.3